

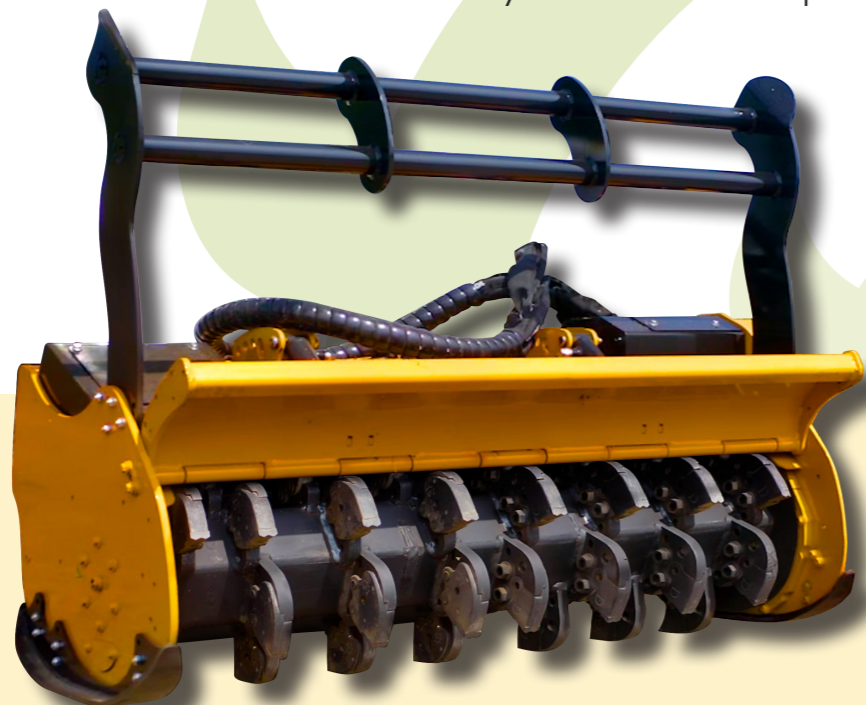


The mulcher Cabezal MF-3 is a standard flow mulching attachment suitable to compact track loader having a weight between 3 and 9 t.

Suitable for wood up to 80 - 100 mm with hammers and 200 - 250 mm with fixed tooth. It is equipped with a 470 mm diameter POLSER + rotor with retractable hammers, and can be coupled with a tungsten pick rotor, which allows working with stumps, roots and large branches.

### CHARACTERISTICS

- ▶ Non-wear steel-plate chassis, thickness 8 mm.
- ▶ Rotor POLSER + of Ø 470 mm.
- ▶ Mulcher for head compact track loader having a weight between 3 and 9 T.
- ▶ 3 CX side belt transmission.
- ▶ Safety chains.
- ▶ High speed and high strength bearings.
- ▶ Hydraulic engine with pistons.
- ▶ Front skid shoes.
- ▶ Swinging forged forestry hammers 360°
- ▶ or fixed tooth with tip in tungsten or blades DRR.
- ▶ Compact drive cover.
- ▶ Valve of recirculation incorporated into the motor.
- ▶ Rear hydraulic hood.
- ▶ Model built under EC Normative.
- ▶ Safety indicators visible to personnel.



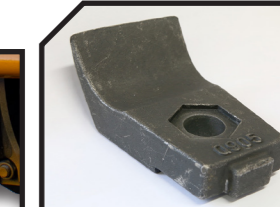
Hydraulic hood



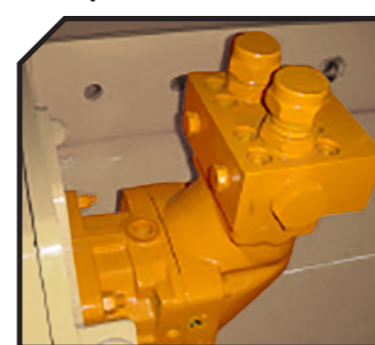
Swinging forged forestry hammers 360°



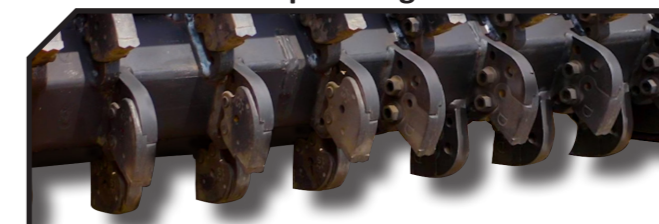
Blades DRR



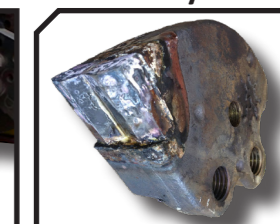
Valve of recirculation incorporated into the motor



Fixed tooth with tip in tungsten

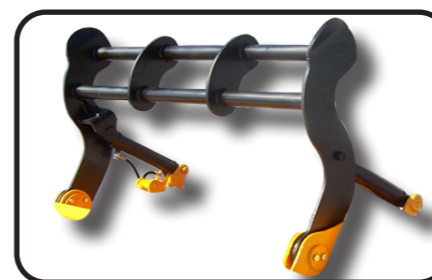


FIXE TOP System



MODEL	mm	HORSE POWER		kg	Nº BELTS TYPE	Dimensions (mm)					RPM Rotor max.				
		min. req.	max. aut.			A	A	B	B	C		C			
T-1400	1400	90-100 l/min	350 bar	12	36	18	793	3 CX	1635	64"	995	39"	812	32"	2200
T-1600	1600	90-100 l/min	350 bar	16	44	22	897	3 CX	1835	72"	995	39"	812	32"	2200
T-1800	1800	90-100 l/min	350 bar	16	50	24	957	3 CX	2035	80"	995	39"	812	32"	2200
T-2000	2000	90-100 l/min	350 bar	20	50	26	1015	3 CX	2235	88"	995	39"	812	32"	2200

### OPTIONS



▶ Pushing frame

▶ Hooking



▶ Centralized greasing

