



Adaptable for excavators and special carriers having a weight between 15 and 25 t.

Steel-plate chassis of 10 mm with the hooking screwed on the top of the mulcher, which reinforce the chassis, giving the possibility of several positions of use.

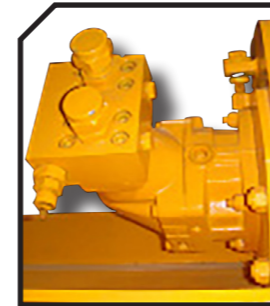
Suitable for the maintenance of forest, riverbanks, bushes up to 120 mm of diameter.

CHARACTERISTICS

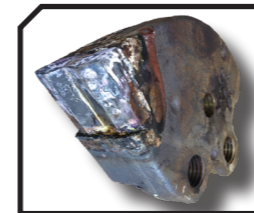
- ▶ Non-wear steel-plate chassis, thickness 10 mm.
- ▶ Rotor POLSER + of Ø 550 mm.
- ▶ Mulcher for excavators having a weight between 15 and 25 T.
- ▶ 4 XPC side belt transmission.
- ▶ Double safety chains.
- ▶ High speed and high strength bearings.
- ▶ Hydraulic engine with pistons.
- ▶ Valve of recirculation incorporated into the motor.
- ▶ Front skid shoes.
- ▶ Compact drive cover.
- ▶ Swinging forged forestry hammers 360° or fixed tooth with tip in tungsten or blades DRR.
- ▶ Model built under EC Normative.
- ▶ Safety indicators visible to personnel.



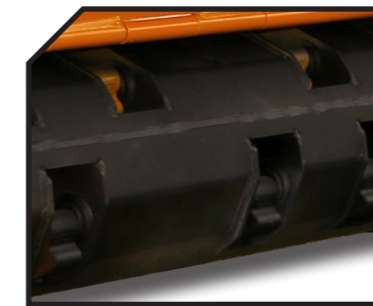
Hydraulic engine with pistons



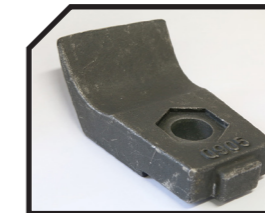
FIXE TOP System



Swinging forged forestry hammers 360°



Blades DRR



Compact drive cover



Fixed tooth with tip in tungsten



MODEL	mm	HORSE POWER		9	26	14	900	4 XPC	Nº BELTS TYPE						RPM Rotor max.
		min. req.	max. aut.						A mm	A in	B mm	B in	C mm	C in	
T-1000	1000	150-160 l/min	350 bar	9	26	14	900	4 XPC	1280	50"	1150	45"	803	32"	2000
T-1250	1250	150-160 l/min	350 bar	9	32	16	1024	4 XPC	1530	60"	1150	45"	810	32"	2000
T-1500	1500	150-160 l/min	350 bar	12	38	20	1172	4 XPC	1780	70"	1150	45"	810	32"	2000
T-1600	1600	150-160 l/min	350 bar	12	40	22	1229	4 XPC	1880	74"	1150	45"	810	32"	2000
T-1800	1800	150-160 l/min	350 bar	16	44	24	1325	4 XPC	2080	82"	1150	45"	810	32"	2000
T-2000	2000	150-160 l/min	350 bar	16	50	26	1428	4 XPC	2280	90"	1150	45"	810	32"	2000

OPTIONS



▶ Centralized greasing

▶ Mechanical hood

▶ Hydraulic hood



▶ Ripper

▶ Hooking

