



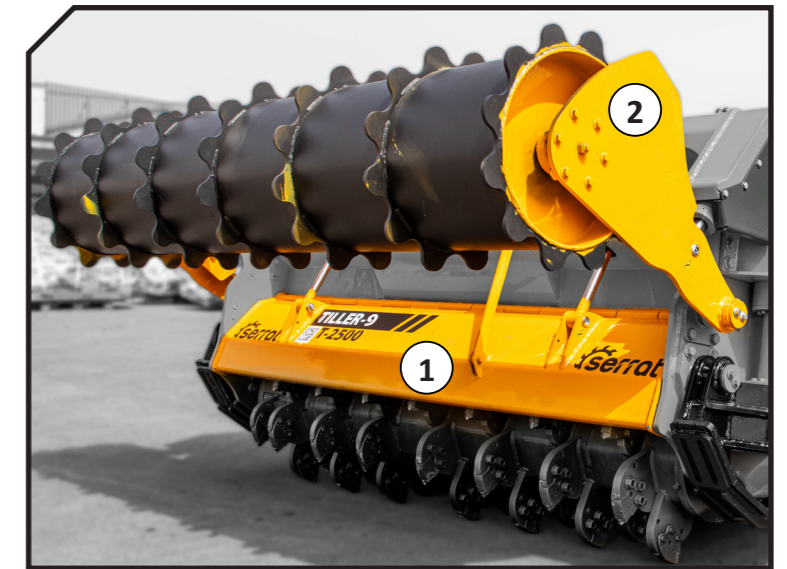
Soil preparation machine up to a depth of 700 mm, for tractors between 400 - 700 HP. Transforms forest land, with stumps and rocks, in land for cultivation avoiding accidents in later processes.

### CHARACTERISTICS

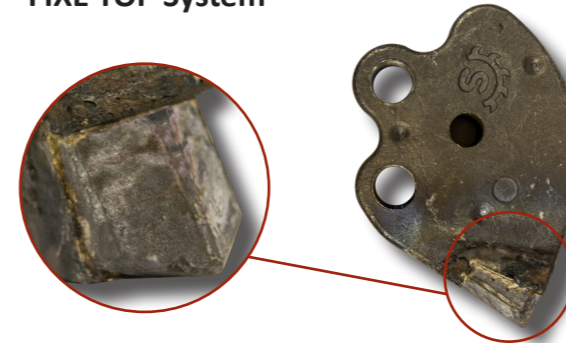
- ▶ Steel-plate chassis, thickness 12 mm.
- ▶ Rotor **FIXE TOP** of Ø 900 mm.
- ▶ Gearbox **SERRAT** for 700 HP with gears.
- ▶ Speed change with gears (Optional).
- ▶ Supports of bearing rotor in steel.
- ▶ Oscillating bearings of double row of rollers.
- ▶ PTO 1,000 rpm.
- ▶ Rear hydraulic hood.
- ▶ Front hydraulic hood anti projections.
- ▶ Chassis internal reinforcements, thickness 10 mm.
- ▶ Interchangeable anvil.
- ▶ System antiwire in rotor.
- ▶ Hydraulic levelling roller.
- ▶ Model built under EC Normative.
- ▶ Safety indicators visible to personnel.



1. Rear hydraulic hood
2. Hydraulic levelling roller



#### FIXE TOP System

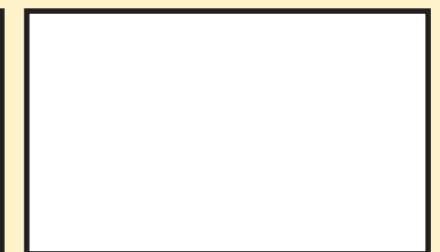


\*For working in depth it is recommended that the tractor has a Creeper or Vario.

MODEL	mm	KW-HP	KG	GEARS	DIMENSIONS							
					A mm	A in	B mm	B in	C mm	C in		
T-3000	3000	298 - 400 522 - 700	68	6450	2	3390	134"	2400	94"	1610	63"	1000
T-3500	3500	298 - 400 522 - 700	80	6670	2	3890	153"	2400	94"	1610	63"	1000



Carretera nacional 240 km. 149,3  
22310 Castejón del Puente (Huesca)-España  
Tfno. (+34) 974 417 830  
www.serrat.com - comercial@serrat.es



The data presented in this catalog are provided for information purposes only and are not binding.