



TILLER 7



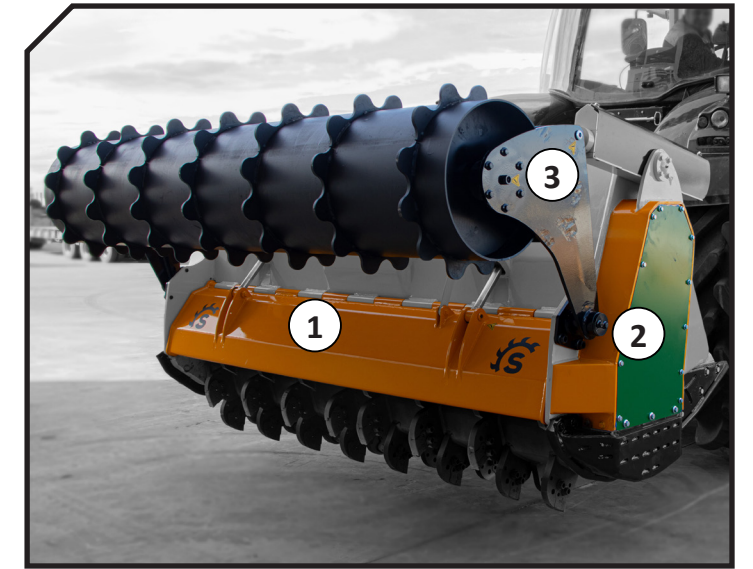
Soil preparation machine up to a depth of 500 mm, for tractors between 300 - 400 HP. Transforms forest land, with stumps and rocks, in land for cultivation avoiding accidents in later processes.

CHARACTERISTICS

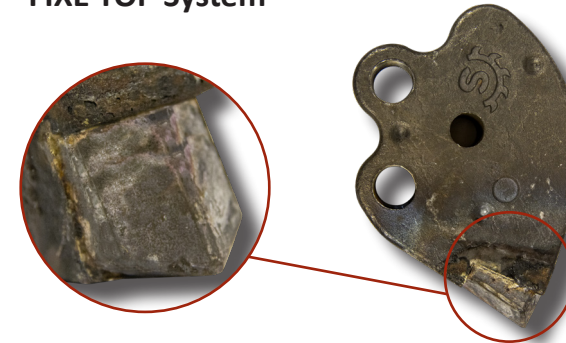
- ▶ Steel-plate chassis, thickness 12 mm.
- ▶ Rotor FIXE TOP of Ø 700 mm.
- ▶ Centralising greasing system.
- ▶ Gearbox SERRAT for 400 HP with Synkrodos-600.
- ▶ Double synchronous belt transmission.
- ▶ Supports of bearing rotor in steel.
- ▶ Oscillating bearings of double row of rollers.
- ▶ PTO 1,000 rpm.
- ▶ Rear hydraulic hood.
- ▶ Front hydraulic hood anti projections.
- ▶ Chassis internal reinforcements, thickness 10 mm.
- ▶ Anvil interchangeable.
- ▶ System antiwire in rotor.
- ▶ Compact drive cover.
- ▶ Hydraulic levelling roller.
- ▶ Model built under EC Normative.
- ▶ Safety indicators visible to personnel.



1. Rear hydraulic hood
2. Compact drive cover
3. Hydraulic levelling roller



FIXE TOP System



Centralized greasing

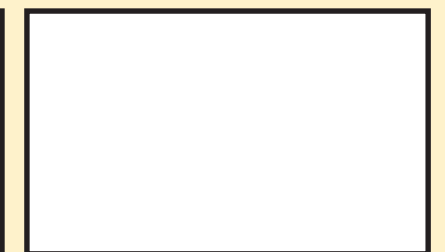


*For working in depth it is recommended that the tractor has a Creeper or Vario.

MODEL	mm	KW-HP	KG	Nº BELTS TYPE	Dimensions						
					A mm	A in	B mm	B in	C mm	C in	
T-2500	2500	224 - 300 298 - 400	56	5000	2890	114"	2400	94"	1610	63"	1000
T-3000	3000	224 - 300 298 - 400	68	5200	3390	134"	2400	94"	1610	63"	1000



Carretera nacional 240 km. 149,3
22310 Castejón del Puente (Huesca)-España
Tfno. (+34) 974 417 830
www.serrat.com - comercial@serrat.es



The data presented in this catalog are provided for information purposes only and are not binding.