

serrat

TILLER 5



FIXE TOP



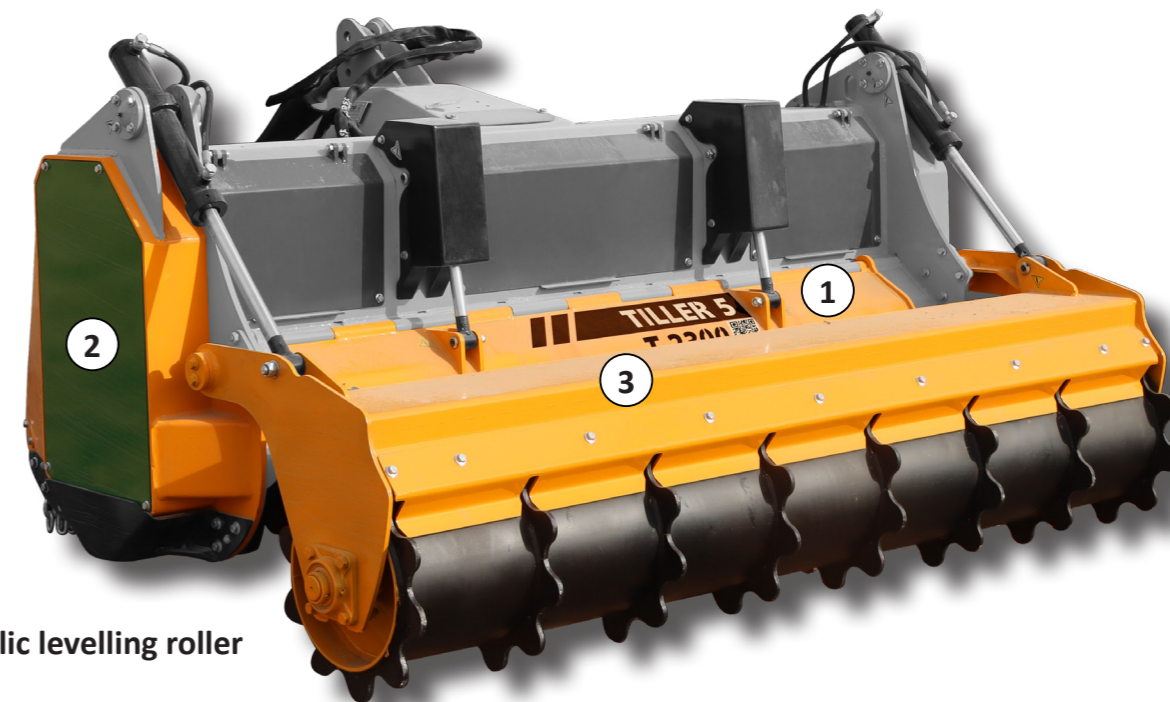
Soil preparation machine up to a depth of 200 mm, for tractors between 150 - 200 HP. Transforms forest land, with stumps and rocks, in land for cultivation avoiding accidents in later processes.

CHARACTERISTICS

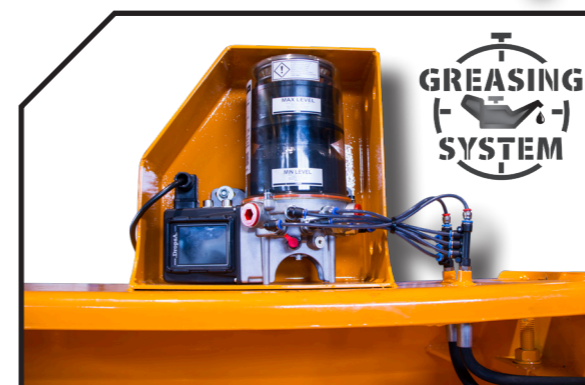
- ▶ Steel-plate chassis, thickness 10 mm.
- ▶ Rotor FIXE TOP of Ø 550 mm.
- ▶ Centralising greasing system.
- ▶ Gearbox SERRAT for 200 HP.
- ▶ 2 x 5 XPC belt transmission.
- ▶ Supports of bearing rotor in steel.
- ▶ Oscillating bearings of double row of rollers.
- ▶ PTO 1,000 rpm.
- ▶ Rear hydraulic hood.
- ▶ Protection chains.
- ▶ Chassis internal reinforcements, thickness 10 mm.
- ▶ System antiwire in rotor.
- ▶ Compact drive cover.
- ▶ Hydraulic levelling roller.
- ▶ Model built under EC Normative.
- ▶ Safety indicators visible to personnel.



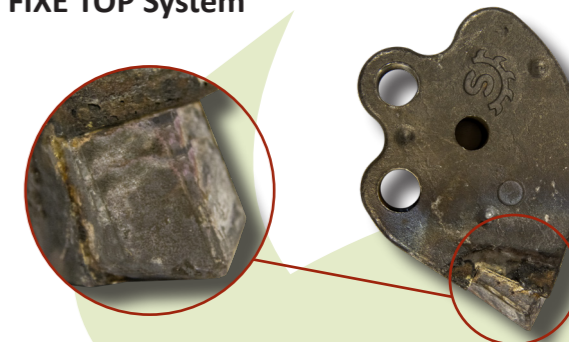
1. Rear hydraulic hood
2. Compact drive cover



3. Hydraulic levelling roller



FIXE TOP System

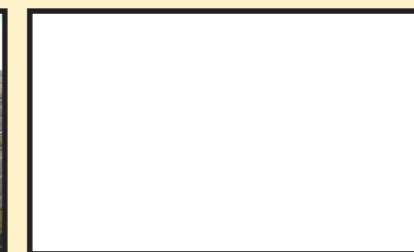


*For working in depth it is recommended that the tractor has a Creeper or Vario.

MODEL	mm	KW-HP	KG	Nº BELTS TYPE	Dimensions (mm/in)							
					A mm	A in	B mm	B in	C mm	C in		
T-2000	2000	104 - 150 149 - 200	44	1990	2x5 XPC	2345	92"	1840	72"	1380	54"	1000
T-2300	2300	104 - 150 149 - 200	50	2200	2x5 XPC	2645	104"	1840	72"	1380	54"	1000
T-2500	2500	104 - 150 149 - 200	56	2290	2x5 XPC	2845	112"	1840	72"	1380	54"	1000

serrat

Carretera nacional 240 km. 149,3
22310 Castejón del Puente (Huesca)-España
Tfno. (+34) 974 417 830
www.serrat.com - comercial@serrat.es



The data presented in this catalog are provided for information purposes only and are not binding.