

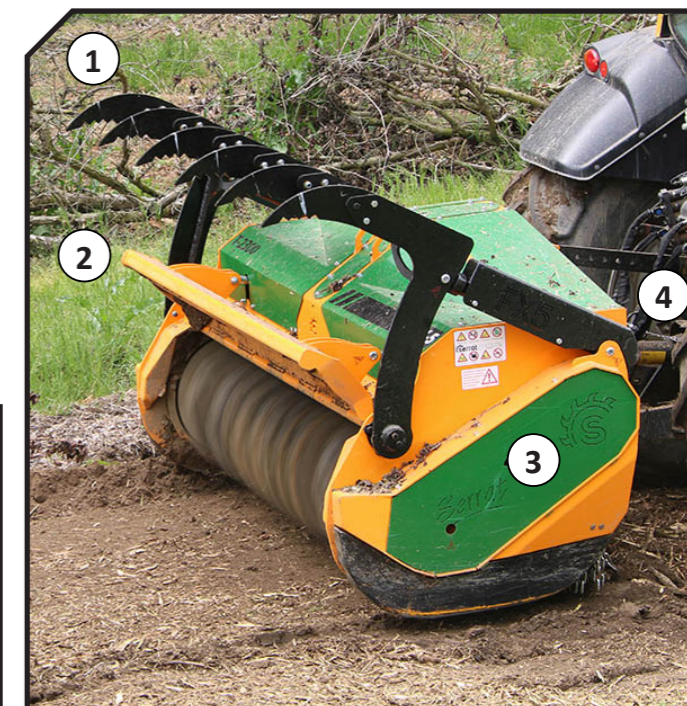
Heavy duty forestry mulcher for tractors between 180 and 280 HP. Equipped with swinging hammers for the cleaning of brushwood, which favors the growth of trees, the reclamation of land, the maintenance and restoration of banks, the maintenance of areas under power lines, forestry roads, fire blocking lines. Equipped with rotor of fixed tooth with system FIXE TOP, for thick wood and stumps. This mulcher integrates all the necessary options for an optimal forest work.

## CHARACTERISTICS

- ▶ Steel-plate chassis, thickness 10 mm.
- ▶ Rotor POLSER + of Ø 625 mm.
- ▶ Gearbox with freewheel included.
- ▶ 2 x 4 XPC side belt transmission.
- ▶ Swinging 360° forged forestry hammers SERRAT or fixed tooth with tip in tungsten or blades DRR.
- ▶ Supports of bearing rotor in steel.
- ▶ Oscillating bearings of double row of rollers.
- ▶ Double front safety chains.
- ▶ PTO 1,000 rpm.
- ▶ Steel counter hammers.
- ▶ Front skid shoes.
- ▶ Rear hydraulic hood with line of steel counter hammers.
- ▶ Chassis internal reinforcements.
- ▶ System antiwire in rotor.
- ▶ Compact drive cover.
- ▶ Hydraulic pushing frame.
- ▶ Transmission by cardan to side belts.
- ▶ Pulleys of diameter 290 mm.
- ▶ Model built under EC Normative.
- ▶ Safety indicators visible to personnel.



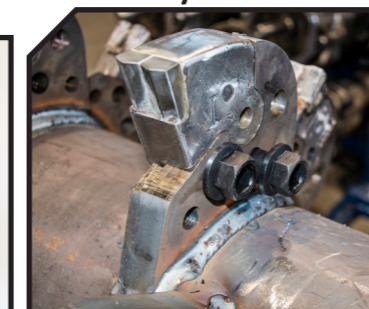
1. Pushing frame
2. Rear hydraulic hood
3. Compact drive cover
4. Transmission by cardan to side belts



Blades DRR



FIXE TOP System

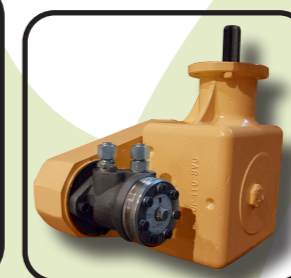


MODEL	mm	KW-HP	mm	mm	mm	KG	Nº BELTS TYPE	mm						mm
								A	A	B	B	C	C	
T-2000	2000	134 - 180 208 - 280	20	50	26	2830	2 x 4 XPC	2370	94"	1940	76"	1730	68"	1000
T-2300	2300	134 - 180 208 - 280	20	58	28	3220	2 x 4 XPC	2670	106"	1940	76"	1730	68"	1000
T-2500	2500	134 - 180 208 - 280	25	62	30	3450	2 x 4 XPC	2870	114"	1940	76"	1730	68"	1000

## OPTIONS



▶ Torque converter



▶ Hidrahelp

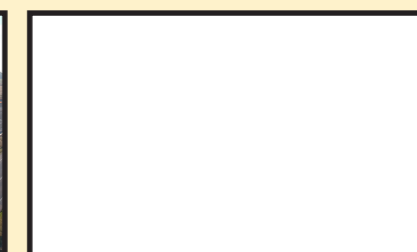


▶ Centralized greasing

▶ Rail Box



Carretera nacional 240 km. 149,3  
22310 Castejón del Puente (Huesca)-España  
Tfno. (+34) 974 417 830  
www.serrat.com - comercial@serrat.es



The data presented in this catalog are provided for information purposes only and are not binding.