

serrat

PRO REVERSIBLE SIDE SHIFT

550 POLSER  GIROSTOP  SEKURLAST



Mulcher conceived for the maintenance of vegetable mantle, regeneration of meadows, grassland and to mulch remains of prunings.

It is a mulcher of universal use and with highest reliability.

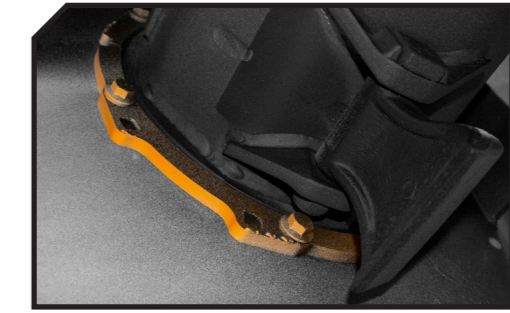
Rotor POLSER of 550 mm of diameter for prunings up to 100 - 120 mm of diameter. Its reversible and moveable configuration allows to drive the machine well in the rear power lift as in the front in reversible tractors avoiding to tread on the material to mulch.





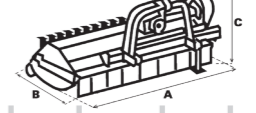
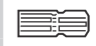
CHARACTERISTICS

- ▶ Steel-plate chassis, thickness 10 mm.
- ▶ Rotor POLSER of Ø 550 mm.
- ▶ Gearbox SERRAT.
- ▶ 3/4 XPC side belt transmission.
- ▶ Forged agricultural hammers SERRAT.
- ▶ GIROSTOP system into the bolt of the hammer.
- ▶ Supports of bearing rotor in steel.
- ▶ High speed and high strength bearings.
- ▶ Front protection curtain.
- ▶ System antiwire in rotor.
- ▶ Double bearing on rear roller.
- ▶ Rear height-adjustable roller Ø 180 mm (210 mm from T-2000).
- ▶ PTO 540 rpm (1,000 rpm from T-2800).
- ▶ Rear roller scraper.
- ▶ 3 lines of counter hammers.
- ▶ Model built under EC Normative.
- ▶ Safety indicators visible to personnel.



System antiwire in rotor



MODEL	 mm	 KW-HP		 KG	Nº BELTS TYPE							
						A mm	A in	B mm	B in	C mm	C in	
T-1500	1500	51 - 70 96 - 130	12	895	3 XPC	1696	67"	1336	53"	1080	43"	540
T-1600	1600	55 - 75 96 - 130	12	916	3 XPC	1796	71"	1336	53"	1080	43"	540
T-1800	1800	59 - 80 96 - 130	16	976	3 XPC	1997	79"	1336	53"	1080	43"	540
T-2000	2000	63 - 85 96 - 130	16	1105	4 XPC	2206	87"	1336	53"	1080	43"	540
T-2300	2300	66 - 90 96 - 130	20	1220	4 XPC	2506	99"	1336	53"	1080	43"	540
T-2500	2500	70 - 95 96 - 130	20	1252	4 XPC	2706	106"	1336	53"	1080	43"	540
T-2800	2800	74 - 100 96 - 130	28	1420	4 XPC	3006	118"	1336	53"	1080	43"	1000

OPTIONS



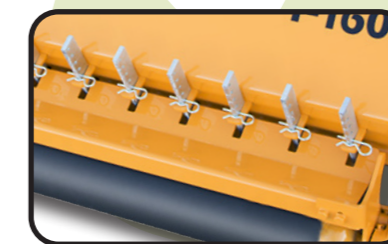
▶ Front gum



▶ Rear gum



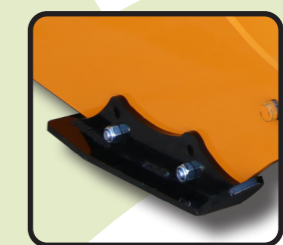
▶ Front chains



▶ Rear tine retainers

▶ Freewheel

▶ Preparation for vineyard



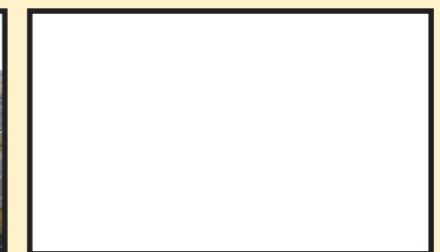
▶ Front adjustable skid shoes



▶ Reinforced roller

serrat

Carretera nacional 240 km. 149,3
22310 Castejón del Puente (Huesca)-España
Tfno. (+34) 974 417 830
www.serrat.com - comercial@serrat.es



The data presented in this catalog are provided for information purposes only and are not binding.