



Mulcher conceived for the maintenance of vegetable mantle, regeneration of meadows, grassland and to mulch remains of prunings.

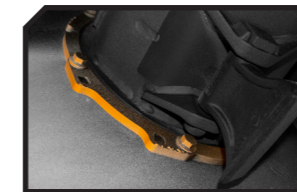
It is a mulcher of universal use and with highest reliability. Rotor POLSER of 550 mm of diameter for prunings up to 100 - 120 mm of diameter. Its movable configuration displaces laterally 325-450 mm of the axis of work by a hydraulic cylinder.





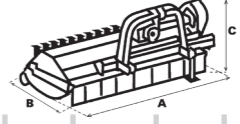
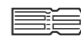
CHARACTERISTICS

- ▶ Steel-plate chassis, thickness 10 mm.
- ▶ Rotor POLSER of Ø 550 mm.
- ▶ Gearbox SERRAT.
- ▶ 3/4 XPC side belt transmission.
- ▶ Forged agricultural hammers SERRAT.
- ▶ GIROSTOP system into the bolt of the hammer.
- ▶ Supports of bearing rotor in steel.
- ▶ High speed and high strength bearings.
- ▶ Front protection curtain.
- ▶ System antiwire in rotor.
- ▶ Double bearing on rear roller.
- ▶ Rear height-adjustable roller Ø 180 mm (210 mm from T-2000).
- ▶ PTO 540 rpm (1,000 rpm from T-2500).
- ▶ Rear roller scraper.
- ▶ 3 lines of counter hammers.
- ▶ Model built under EC Normative.
- ▶ Safety indicators visible to personnel.



System antiwire in rotor



MODEL	 mm	 KW-HP			Nº BELTS TYPE							
						A mm	A in	B mm	B in	C mm	C in	
T-1400	1400	48 - 65 96 - 130	12	750	3 XPC	1596	63"	1275	50"	1070	42"	540
T-1500	1500	51 - 70 96 - 130	12	775	3 XPC	1695	67"	1275	50"	1070	42"	540
T-1600	1600	55 - 75 96 - 130	12	800	3 XPC	1796	71"	1275	50"	1070	42"	540
T-1800	1800	59 - 80 96 - 130	16	860	3 XPC	1997	79"	1275	50"	1070	42"	540
T-2000	2000	63 - 85 96 - 130	16	1003	4 XPC	2206	87"	1329	52"	1070	42"	540
T-2300	2300	66 - 90 96 - 130	20	1077	4 XPC	2506	99"	1329	52"	1070	42"	540
T-2500	2500	70 - 95 96 - 130	20	1135	4 XPC	2706	106"	1329	52"	1070	42"	1000
T-2800	2800	74 - 100 96 - 130	28	1330	4 XPC	3028	119"	1329	52"	1070	42"	1000

OPTIONS

▶ Green x1 ▶ Green x2

▶ Preparation for vineyard

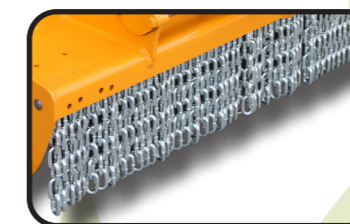


▶ Front gum

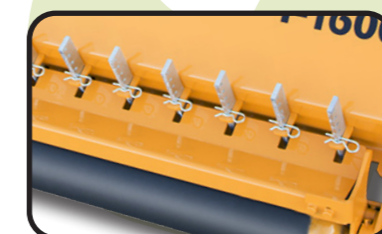


▶ Rear gum

▶ Freewheel

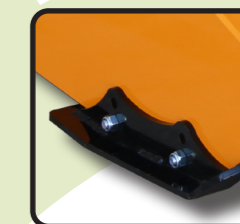


▶ Front chains



▶ Rear tine retainers

▶ Frontal with side shift



▶ Front adjustable skid shoes



▶ Reinforced roller

