



Mulcher conceived for the maintenance of vegetable mantle, regeneration of meadows, frassland and to mulch remains of prunings. It is a mulcher of universal use and with highest reliability. Rotor POLSER of Ø 550 mm for prunings up to 100 - 120 mm of diameter. Its fixed configuration allows to position the gearbox to align the work to the axis of the tractor.

CHARACTERISTICS

- ▶ Steel-plate chassis, thickness 10 mm.
- ▶ Rotor POLSER of Ø 550 mm.
- ▶ Gearbox SERRAT.
- ▶ 3/4 XPC side belt transmission.
- ▶ Forged agricultural hammers SERRAT.
- ▶ GIROSTOP system into the bolt of the hammer.
- ▶ Supports of bearing rotor in steel.
- ▶ High speed and high strength bearings.
- ▶ Front protection curtain.
- ▶ System antiwire in rotor.
- ▶ Double bearing on rear roller.
- ▶ Rear height-adjustable roller Ø 180 mm (210 mm from T-2000).
- ▶ PTO 540 rpm (1,000 rpm from T-2500).
- ▶ Rear roller scraper.
- ▶ 3 lines of counter hammers.
- ▶ Model built under EC Normative.
- ▶ Safety indicators visible to personnel.



System antiwire in rotor



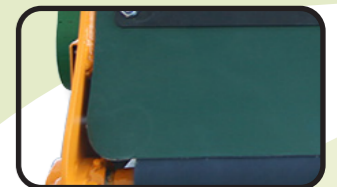
MODEL	mm	KW-HP	kg	Nº BELTS TYPE	Diagram							
					A mm	A in	B mm	B in	C mm	C in		
T-1250	1250	44 - 60 96 - 130	12	618	3 XPC	1446	57"	1289	51"	948	37"	540
T-1400	1400	48 - 65 96 - 130	12	650	3 XPC	1596	63"	1289	51"	948	37"	540
T-1500	1500	51 - 70 96 - 130	12	680	3 XPC	1695	67"	1289	51"	948	37"	540
T-1600	1600	55 - 75 96 - 130	12	705	3 XPC	1796	71"	1289	51"	954	38"	540
T-1800	1800	59 - 80 96 - 130	16	770	3 XPC	1997	79"	1298	51"	954	38"	540
T-2000	2000	63 - 85 96 - 130	16	888	4 XPC	2206	87"	1344	53"	1056	42"	540
T-2300	2300	66 - 90 96 - 130	20	980	4 XPC	2506	99"	1344	53"	1106	43"	540
T-2500	2500	70 - 95 96 - 130	20	1038	4 XPC	2706	106"	1344	53"	1120	44"	1000
T-2800	2800	74 - 100 96 - 130	28	1188	4 XPC	3005	118"	1344	53"	1164	46"	1000
T-3000	3000	79 - 105 96 - 130	32	1280	4 XPC	3237	127"	1344	53"	1164	46"	1000
T-3200	3200	81 - 110 96 - 130	32	1388	4 XPC	3437	135"	1344	53"	1164	46"	1000

OPTIONS

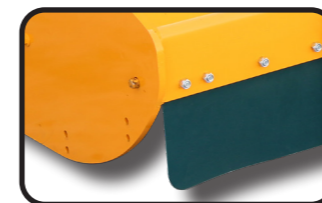
- ▶ Preparation for vineyard
- ▶ Freewheel
- ▶ Green x1
- ▶ Green x2



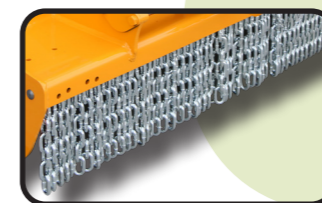
▶ Reinforced roller



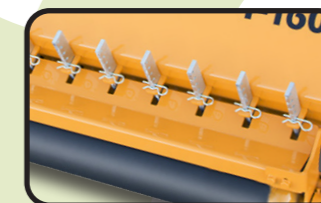
▶ Rear gum



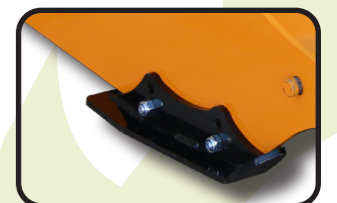
▶ Front gum



▶ Front chains



▶ Rear tine retainers



▶ Front adjustable skid shoes

