

serrat



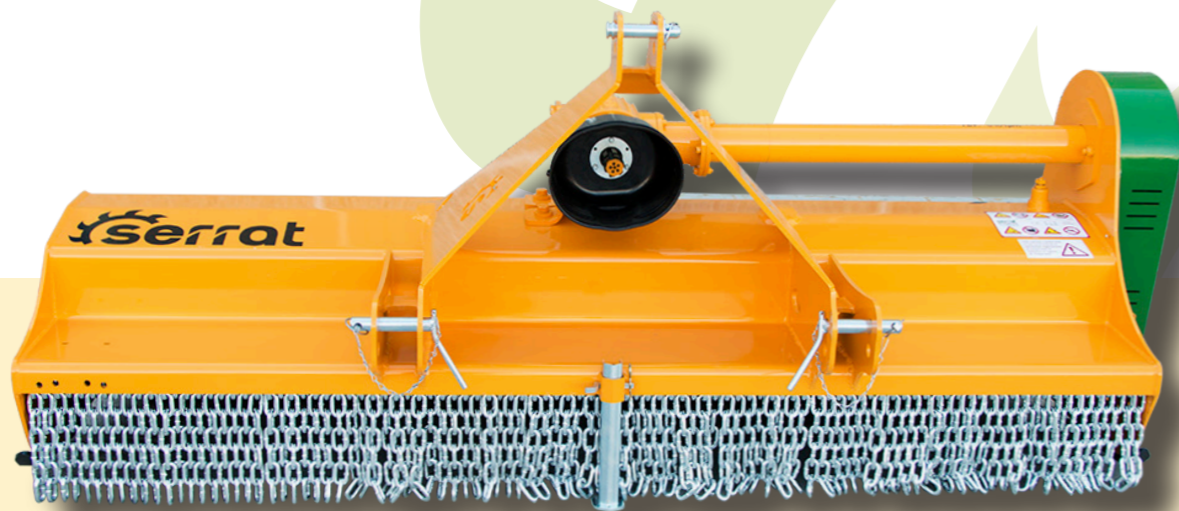
Mulcher of hammers, for the elimination of remains of pruning up to 80 mm and maintenance of vegetable mantle. Ideal for the regeneration of meadows and grassland.

Rotor POLSER of 450-500 mm of diameter. Excellent results in industrial gardening and maintenance of borders.

Its fixed configuration allows to choose the position of the gearbox to reach the work camp and that the transmission works straight line.

CHARACTERISTICS

- ▶ Steel-plate chassis, thickness 10 mm.
- ▶ Rotor POLSER of Ø 450/500 mm.
- ▶ Gearbox SERRAT.
- ▶ 3 XPC side belt transmission.
- ▶ Forged agricultural hammers SERRAT.
- ▶ GIROSTOP system into the bolt of the hammer.
- ▶ Supports of bearing rotor in steel.
- ▶ High speed and high strength bearings.
- ▶ Front protection curtain.
- ▶ System antiwire in rotor.
- ▶ Double bearing on rear roller.
- ▶ Rear height-adjustable roller Ø 180 mm (210 mm from T-2300).
- ▶ PTO 540 rpm (1,000 rpm from T-2500).
- ▶ Rear roller cleaner.
- ▶ Steel counter hammers.
- ▶ Model built under EC Normative.
- ▶ Safety indicators visible to personnel.



System antiwire in rotor



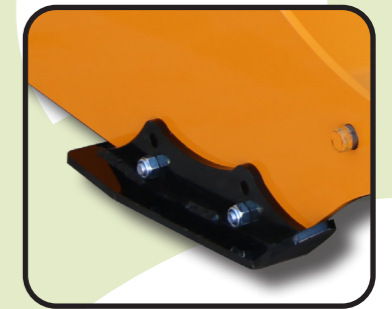
MODEL	mm	KW-HP	KG	Nº BELTS TYPE	Diagram							
					A mm	A in	B mm	B in	C mm	C in		
450 POLSER	T-1600	45 - 60 90 - 120	12	612	3 XPC	1790	70"	1180	46"	1000	39"	540
	T-1800	48 - 65 90 - 120	16	662	3 XPC	1990	78"	1180	46"	1000	39"	540
	T-2000	51 - 70 90 - 120	16	708	3 XPC	2190	86"	1230	48"	1000	39"	540
500 POLSER	T-2300	59 - 80 90 - 120	20	812	3 XPC	2490	98"	1230	48"	1000	39"	540
	T-2500	66 - 90 90 - 120	20	937	3 XPC	2690	106"	1290	51"	1000	39"	1000
	T-2800	81 - 110 90 - 120	24	1025	3 XPC	2990	118"	1290	51"	1000	39"	1000

OPTIONS

- ▶ Rear wheels
- ▶ Freewheel



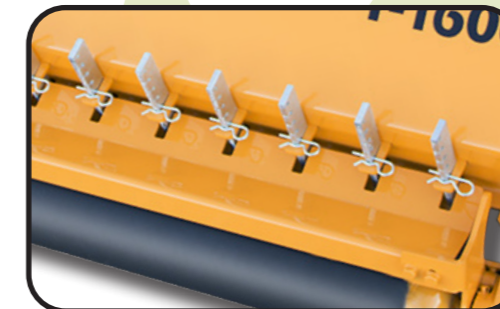
▶ Front chains



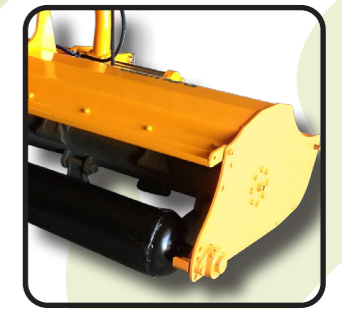
▶ Front adjustable skid shoes



▶ Front wheels



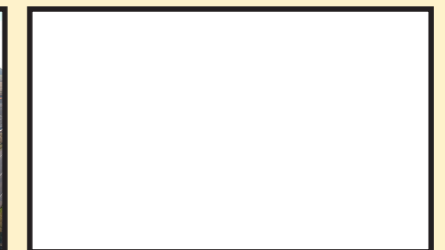
▶ Rear tine retainers



▶ ETT

serrat

Carretera nacional 240 km. 149,3
22310 Castejón del Puente (Huesca)-España
Tfno. (+34) 974 417 830
www.serrat.com - comercial@serrat.es



The data presented in this catalog are provided for information purposes only and are not binding.